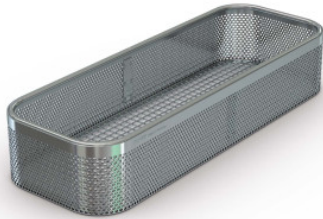


## Fine mesh basket

**HUPFER**  
we make work flow

Технические характеристики изделия 7501153 | SiKo/КТ 480/250/60 BR  
06 LB DM mD

### Технические характеристики



<b>Масса:</b>	2 кг
<b>Ширина:</b>	480 мм
<b>Глубина:</b>	250 мм
<b>Высота:</b>	60 мм

*Показан пример без декоративных элементов,  
точность технического описания не  
гарантируется.*

The sieve basket for small parts to hold accessories during the cleaning process.

The high-quality sieve basket for small parts made of stainless steel is designed to hold accessory parts of medical instruments during the cleaning process. The Hupfer sieve basket for small parts is an indispensable companion when using medical instruments in hospitals, doctors' practices, and other medical facilities. The sieve basket frame made of robust stainless steel wire, with a sieve basket and lid made of fine mesh stainless steel fabric, provides secure storage and good protection for medical small parts. Thanks to a secure quick-release mechanism, the valuable instruments remain permanently protected in the sieve basket throughout the entire cleaning process. The special wire mesh ensures optimal flow and maximum cleaning effect for the highest hygiene.

- Fine-mesh fabric enables secure containment and protection of small parts
- Quick-release keeps the sieve basket permanently closed and ensures the secure retention of small parts in the sieve basket
- Special wire mesh ensures optimal flow and highest hygiene

Дата обращения: 07.04.2025,  
16:42:32

*Значения величин и размеров являются приблизительными, точность  
технического описания не гарантируется. © Hupfer*