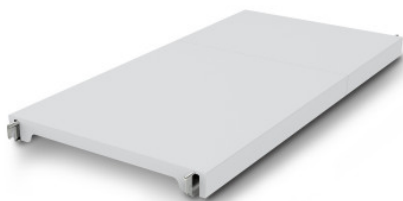


## NORM12 solid shelf

**HUPFER**  
we make work flow

Технические характеристики изделия 0602619 | A-GS/N12 0900/600

### Технические характеристики



<b>Max. bay load</b>	200
<b>Carbon footprint (TM65 Basic Report)</b>	42 kgCO <sub>2</sub> e
<b>Масса:</b>	3 кг
<b>Ширина:</b>	900 мм
<b>Глубина:</b>	584 мм
<b>Высота:</b>	53 мм

*Показан пример без декоративных элементов,  
точность технического описания не  
гарантируется.*

Closed support made of polystyrene segments on aluminium bearer beams.

The effortlessly attachable, closed plastic tray provides a lightweight, safe, and very easy-to-clean surface, even dishwasher safe. Despite its low weight, this tray from the Norm 12 shelf can hold high loads. Temperatures of -30°C are also no problem in the long term. The materials used are sustainable, 100% recyclable, and so valuable that Hupfer guarantees to buy back your entire shelf at the end of its service life.

- Closed design in plastic with low weight ensures safe, hygienic storage and clear access at all times
- Quality processing of high-quality plastic enables perfect hygiene and easy cleaning even in the dishwasher
- Valuable materials ensure sustainability and value retention
- Stable construction guarantees high load capacity
- Modular system ensures easy handling from assembly to cleaning with minimal effort

Дата обращения: 19.04.2025,  
15:10:27

*Значения величин и размеров являются приблизительными, точность  
технического описания не гарантируется. © Hupfer*