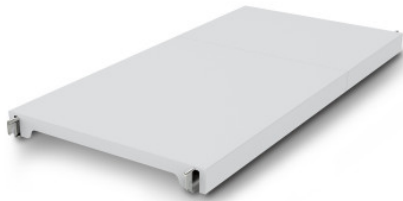


NORM12 solid shelf

Технические характеристики изделия 0602539 | A-GS/N12 0800/500

HUPFER
we make work flow

Технические характеристики



Max. bay load	200
Carbon footprint (TM65 Basic Report)	34 kgCO ₂ e
Масса:	3 кг
Ширина:	800 мм
Глубина:	484 мм
Высота:	53 мм

*Показан пример без декоративных элементов,
точность технического описания не
гарантируется.*

Closed edition made of polystyrene segments on aluminium support beams.

The effortlessly attachable, closed plastic shelf offers a lightweight, secure, and very easy-to-clean surface that can even be washed in the dishwasher. This shelf of the Norm 12 rack can support high loads despite its low weight. Temperatures of -30°C are also not a problem in the long term. The materials used are sustainable, 100% recyclable, and so valuable that Hupfer guarantees to buy back your entire shelf at the end of its service life.

- Closed design in plastic with low weight ensures safe, hygienic storage and clear access at all times
- Quality workmanship of high-quality plastic enables perfect hygiene and easy cleaning even in the dishwasher
- Valuable materials ensure sustainability and value retention
- Stable construction guarantees high load capacity
- Modular system allows for easy handling from assembly to cleaning with minimal effort

Дата обращения: 18.04.2025,
23:33:06

*Значения величин и размеров являются приблизительными, точность
технического описания не гарантируется. © Hupfer*