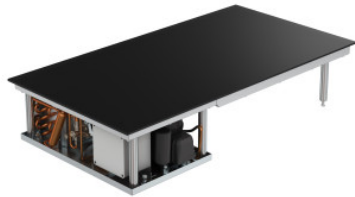


Hot-Cold-Plate GN-4/1 black glass top with cooling unit built-in unit, without frame

Technical data



Similar to illustration, technical modifications reserved. Without decoration.

Payload:	36 kg
Capacity:	2420 W
Supply voltage:	AC 220-230 V
Nominal current:	10.50 A
Protection class:	Klasse 1
Frequency:	50-60 Hz
Weight:	46.254 kg
Width:	1320 mm
Depth:	530 mm
Height:	200 mm

Hot and cold plate for the presentation and serving of hot and cold food. Device for installation in a counter or mobile bain marie.

High-quality stainless steel unit in stable, self-supporting and hygienic design. A hot and cold plate with a cover plate that ensures optimum temperature distribution due to its excellent temperature distribution is integrated in the cover. The use of a control system with digitally programmable temperatures and compressor cooling technology on the one hand and self-regulating PTC heating elements with a short heat-up phase and a constant linear temperature curve on the other hand additionally enables a fast change between cold and hot operation in the range from -5°C to +140° C.

Time and date of the request:
19.11.2024, 18:25:46

All information / dimensions are approximate, technical changes reserved. © Hupfer