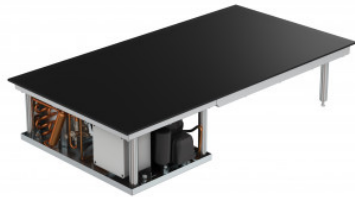


## Hot-Cold-Plate GN-1/1 black glass top with cooling unit built-in unit, without frame

### Technical data



*Similar to illustration, technical modifications reserved. Without decoration.*

|                           |   |
|---------------------------|---|
| <b>Temperature range:</b> | digital controller, precise to the degree |
| <b>Payload:</b>           | 9 kg                                      |
| <b>Capacity:</b>          | 1840 W                                    |
| <b>Supply voltage:</b>    | AC 220-230 V                              |
| <b>Nominal current:</b>   | 8.00 A                                    |
| <b>Protection class:</b>  | Klasse 1                                  |
| <b>Frequency:</b>         | 50-60 Hz                                  |
| <b>Weight:</b>            | 24.113 kg                                 |
| <b>Width:</b>             | 330 mm                                    |
| <b>Depth:</b>             | 530 mm                                    |
| <b>Height:</b>            | 200 mm                                    |

Hot and cold plate for the presentation and serving of hot and cold food. Device for installation in a counter or mobile bain marie.

High-quality stainless steel unit in stable, self-supporting and hygienic design. A hot and cold plate with a cover plate that ensures optimum temperature distribution due to its excellent temperature distribution is integrated in the cover. The use of a control system with digitally programmable temperatures and compressor cooling technology on the one hand and self-regulating PTC heating elements with a short heat-up phase and a constant linear temperature curve on the other hand additionally enables a fast change between cold and hot operation in the range from -5°C to +140° C.

Time and date of the request:  
28.07.2024, 00:25:27

*All information / dimensions are approximate, technical changes reserved. © Hupfer*