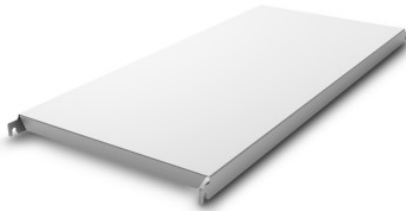


NORM20 solid shelf

P/N: 0202652 | A-GS/N20 1000/400

HUPFER
we make work flow

Technical data



| | |
|---|--|
| Max. bay load | 150 |
| Carbon footprint (TM65 Basic Report) | 57.100000000000001 kgCO ₂ e |
| Weight: | 1.904 kg |
| Width: | 1000 mm |
| Depth: | 340 mm |
| Height: | 40 mm |

Similar to illustration, technical modifications reserved. Without decoration.

Solid shelf, aluminium, made of 0.06" (1.5 mm) thick steel sheet, folded and rebated inwards by 1.6" (40 mm) at the long side and folded by 1.1" (28 mm) at the face side. Additional U-shaped profile as reinforcement strut on the underside with 47-59" (1200-1500 mm) long shelves at a depth of 19.7" and 23.6" (500 and 600 mm).

Time and date of the request:
28.12.2024, 19:49:50

All information / dimensions are approximate, technical changes reserved. © Hupfer