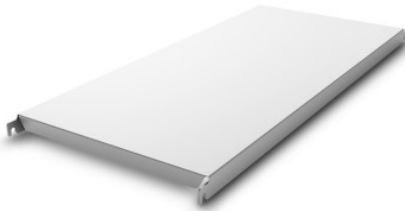


# NORM20 solid shelf

P/N: 0202562 | A-GS/N20 0700/500

**HUPFER**  
we make work flow

## Technical data



<b>Max. bay load</b>	150
<b>Weight:</b>	1.68 kg
<b>Width:</b>	700 mm
<b>Depth:</b>	440 mm
<b>Height:</b>	40 mm

*Similar to illustration, technical modifications reserved. Without decoration.*

Solid shelf, aluminium, made of 0.06" (1.5 mm) thick steel sheet, folded and rebated inwards by 1.6" (40 mm) at the long side and folded by 1.1" (28 mm) at the face side. Additional U-shaped profile as reinforcement strut on the underside with 47-59" (1200-1500 mm) long shelves at a depth of 19.7" and 23.6" (500 and 600 mm).

Time and date of the request:  
04.07.2024, 15:19:28

*All information / dimensions are approximate, technical changes reserved. © Hupfer*