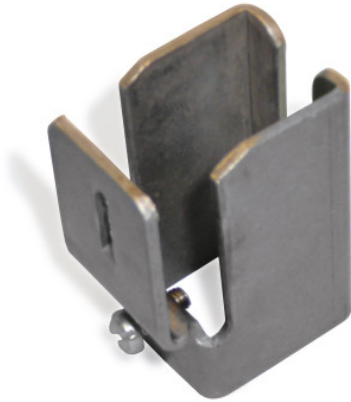


Push through protection bar holder

P/N: 0115252 | RG-SLH



Technical data

Weight:	0.097 kg
Width:	30 mm
Depth:	42 mm
Height:	60 mm

Similar to illustration, technical modifications reserved. Without decoration.

Stainless steel shelf rail holder

Time and date of the request:
20.11.2024, 04:41:36

All information / dimensions are approximate, technical changes reserved. © Hupfer